



CLINTON ARTS CENTER

Clinton, MI
Under construction (2017) by O|X Studio

ROLE: Project architect

PROJECT: The Clinton Arts Center features a complex program including ceramics and glass studios, an art gallery and cafe, rentable retail incubator space and a four-story climbing wall. Slotted into main street in a small town, it combines contemporary design with traditional Midwestern brick vernacular.



TOMUKUN KOREAN BBQ

Ann Arbor, MI
Completed 2014 by O|X Studio

ROLE: Architectural designer, lighting fixture fabricator

PROJECT: The Korean barbecue restaurant features downdraft grill tables, GFRC countertops and surfaces, and 50 handmade steel lanterns. The project was technically and mechanically challenging, involving routing extensive venting through an old bank vault. Recipient of AIA Huron Valley Interior Architecture Award



MCLAREN ENGINEERING

Livonia, MI
Completed 2014 by O|X Studio

ROLE: Architectural designer

PROJECT: The Michigan branch of the auto-parts manufacturer is a complex integration of 60,000 sf office and 40,000 sf of manufacturing space. The building includes a 250 ft green roofing system, extensive sound attenuation systems, and an observation walkway over the factory floor.

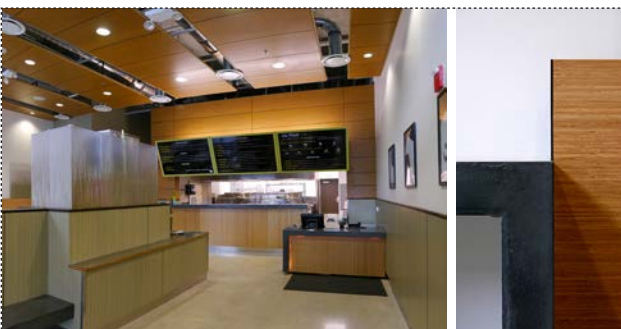


PHIRE BRANDING

Ann Arbor, MI
Completed 2012 by O|X Studio

ROLE: Architectural designer

PROJECT: At project start, the building was split into suites and covered up with ceiling tile and carpet. The space was transformed by uncovering the existing building and shoring up the structure. Dilapidated copper awnings were reused as an interior accent. Recipient of AIA Huron Valley Small-budget Award



NO THAI!

Ann Arbor, MI
Completed 2012 by O|X Studio

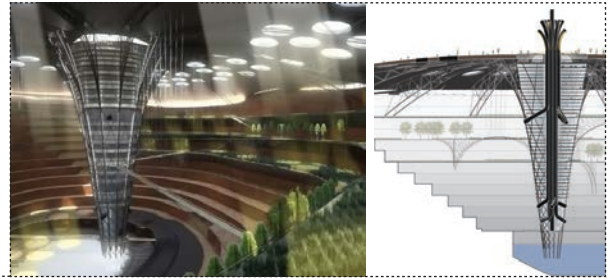
ROLE: Architectural designer

PROJECT: The owners of a popular local chain asked for a prototype for the more upscale look of future restaurants. The design accomplishes this on a frugal budget using a concrete countertop, reclaimed plastic accent panels, and floating ceiling clouds. The prototype has proven successful and the design has been repeated in all subsequent locations of the expanding chain.

CONCEPTUAL ARCHITECTURE

LAVENDER PIT MINE RECLAMATION - 2010

Individual entry in the 2010 Evolo Competition
Featured in print publications including Maxim magazine
PROJECT: skyscraper built downwards into an existing strip-mine. The building supports a giant green roof and creates a controlled environment for human use underneath.
ROLE: Project design, site research, and graphic design



MOTION CAPTURE TOWER - 2012

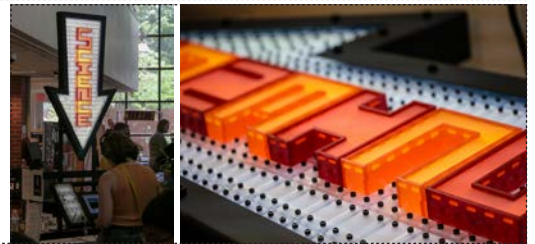
Individual entry in the 2012 Evolo Competition
PROJECT: skyscraper designed to be completely energy passive, using kinetic energy collected from the natural movement of its inhabitants.
ROLE: project design, research, graphic design



INSTALLATIONS

PORTABLE LAB - 2015

Collaboration with Michigan State University, TAPLAB
PROJECT: A portable lab, installed at ArtPrize 2015 and Maker Faire, to conduct scientific research and science outreach. Will be installed at Maker-works winter 2016.
ROLE: Lab design and fabrication



STEEL PAPER LANTERNS - 2014

PROJECT: 50 individualized steel lanterns, installed at Tomukun Korean BBQ in Ann Arbor. Lanterns are reminiscent of paper lanterns, but with modern materials.
ROLE: Lamp design, fabrication and installation



CHANDELIER - 2013

PROJECT: A chandelier installed at a wedding reception, composed of 45 individual acrylic lamps for guests to disassemble and take as souvenirs.
ROLE: Chandelier design, fabrication and installation



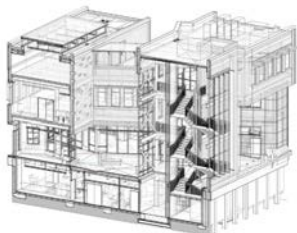
SKILLS

DRAFTING (REVIT & AUTOCAD)

3D DESIGN & RENDERING

ARCHITECTURAL MODELLING

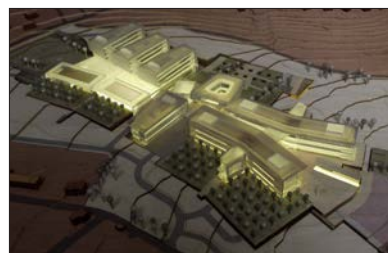
HAND RENDERING



Clinton Arts Center, O|X Studio



Competition Entry



Competition Model, completed at HoK in St. Louis



Uto Sanctuary, student project